

Country Profile Brazil



Edition 2006

Specification	Unit	1995	2000	2004			
Area and Population							
Area	km ²	8 514 877	8 514 877	8 514 877			
Population	1 000	155 822	169 799	181 586			
urban population	%	77,8	81,1	83,3 ¹⁾			
under 15 years	%	32,5	29,6	28,2			
15 to 64 years	%	62,6	64,6	65,8			
65 years and more	%	4,9	5,9	6,0			
Population density	inh. per km ²	18	20	21			
Natural population increase	per 1 000 inh.	14,3	13,4	11,9			
Birth rate	live births per 1 000 inh.	21,1	20,0	19,5 ¹⁾			
Death rate	deaths per 1 000 inh.	6,8	6,7	6,7 ¹⁾			
Total fertility rate	average number of children per woman	2,4	2,2	2,1 ¹⁾			
Infant mortality rate	deaths under 1 year of age per 1 000 live births	36,6	29,7	27,0 ¹⁾			
Life expectancy at birth							
Men	years	63,6	64,8	65,4 ¹⁾			
Women	years	71,1	72,6	73,3 ¹⁾			
		1995	2000	2003			
Health							
Public expenditure on health	% of GDP	3,6	3,4	...			
Inhabitants per doctor	number	785	717	702			
Inhabitants per dentist	number	1 529 ²⁾	1 168	1 047			
Occurrence of AIDS							
New cases reported	number	19 022	27 341	25 123			
Cumulative number	number	94 814	230 478	309 505			
Deaths due to AIDS	per 100 000 inh.	9,7	6,3	6,3 ³⁾			
Number of deaths by selected causes and gender		m	f	m	f	m	f
Diseases of the circulatory system	per 100 000 inh.	161,2	142,7	161,9	141,6
Malignant neoplasms	per 100 000 inh.	65,3	54,8	75,8	62,9
Infectious and parasitic diseases	per 100 000 inh.	28,3	19,7	32,1	19,9
		1995	2000	2004			
Education and Science							
Public expenditure on education	% of GNP	5,1	4,5	...			
Literacy rate (aged 15 years and more)	%	84,5	86,4	88,4 ¹⁾			
Pupils at general schools	1 000	38 044	43 911	43 182			
Teachers at general schools	1 000	1 743	1 968	2 092 ¹⁾			
Pupils per teacher at general schools	number	22	22	21 ¹⁾			
Students (tertiary sector)	1 000	.	2 694	3 480 ¹⁾			
incl. in doctorate`s courses	%	.	1,2	1,2 ¹⁾			
Doctors` degrees conferred	number	2 497	5 345	8 094 ¹⁾			
Patent applications submitted	number	15 839	24 117	21 742			
incl. Brazilian residents	%	45,7	36,8	50,0			
Research institutions	number	158	224	335			
Research groups	number	7 271	11 760	19 470			
Researchers	number	26 799	48 781	77 649			

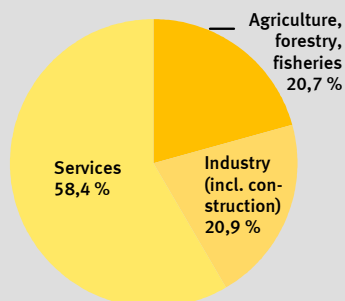
1) 2003.
2) 1997.

3) 2002.

Edition 2006

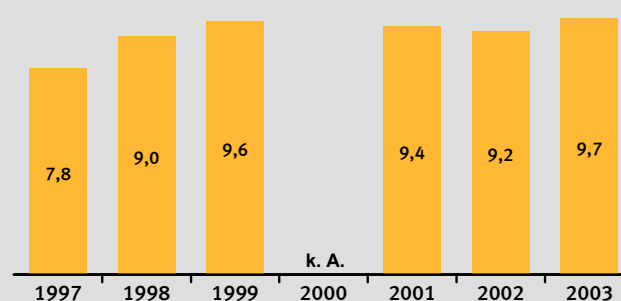
Specification	Unit	2003		
		Total	Men	Women
Labour market ¹⁾				
Total labour force (persons in employment and unemployed persons)	1 000	88 803	50 908	37 896
incl. those under 15 years	1 000	1 910	1 282	629
Labour force participation rate	% of population aged 15 years and more	67,8	80,7	55,9
Persons in employment	1 000	80 163	46 935	33 228
Unemployed persons	1 000	8 640	3 973	4 667
Unemployment rate	%	9,7	7,8	12,3
Youth unemployment rate	%	19,0	15,1	24,5

Persons in employment by sector in 2003 ^{*)}



^{*)} Results of International Labour Organization (ILO).

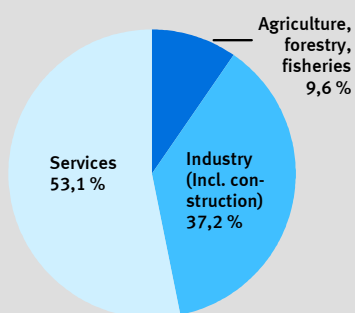
Unemployment rate (%) ^{*)}



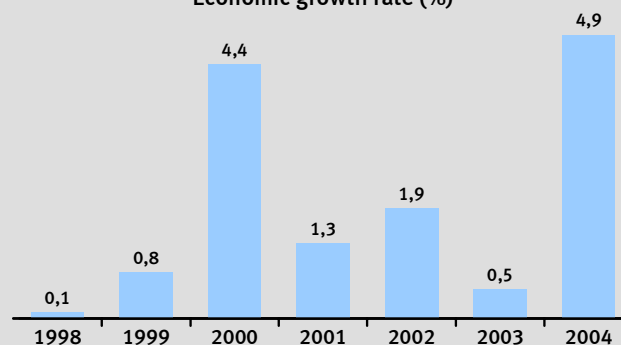
^{*)} Results of International Labour Organization (ILO).

Specification	Unit	2002	2003	2004
Gross Domestic Product				
GDP at current prices	R\$ mn	1 346 028	1 556 182	1 766 621
	US-\$ mn	460 811	505 747	603 973
GDP per capita	R\$	7 630	8 695	9 730
	US-\$	2 610	2 825	3 325
GDP at constant prices of 2000	R\$ mn	1 152 385	1 196 176	1 303 832
	US-\$ mn	629 719	653 648	712 476
GDP: expenditure (at current prices)				
of which:				
Household consumption	%	58,0	56,7	55,2
Government consumption	%	20,1	19,9	18,8
Gross capital formation	%	19,8	19,8	21,3

Gross value added by sector in 2004



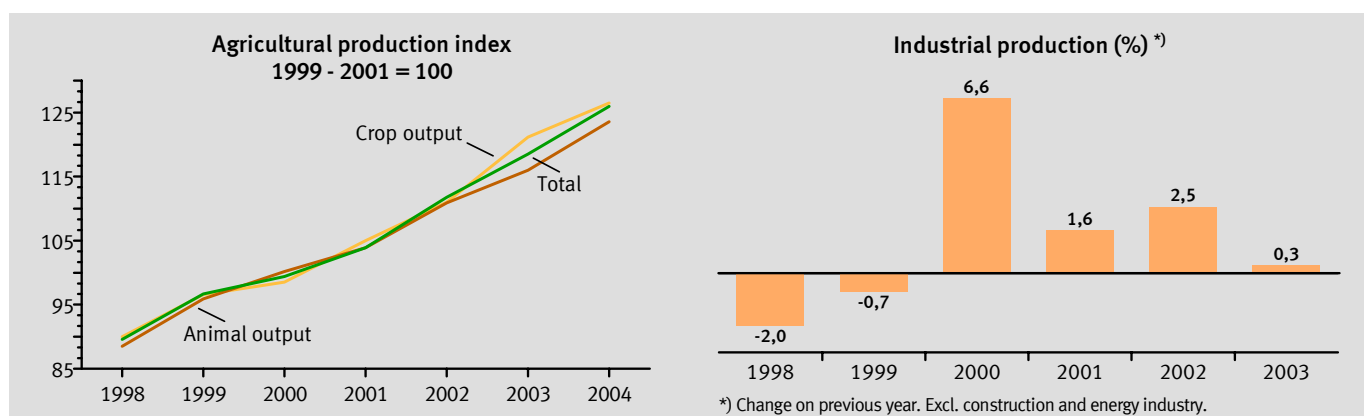
Economic growth rate (%)



1) Results of International Labour Organization (ILO).

Edition 2006

Specification	Unit	1995	2000	2003
Agriculture and Forestry, Fisheries				
Agricultural land	mn ha	258,5	261,4	263,6 ¹⁾
incl. arable land and permant crops	mn ha	65,5	65,2	66,6 ¹⁾
Forest area	mn ha	.	543,9	.
Removals of wood	mn m ³	211,1	235,4	238,5
Production of wheat	mn t	1,5	1,7	6,2
Production of rice (paddy)	mn t	11,2	11,1	10,3
Production of maize	mn t	36,3	32,3	48,3
Production of cassava	mn t	25,4	23,0	22,0
Production of soy beans	mn t	25,7	32,8	51,9
Production of sugar cane	mn t	303,7	326,1	396,0
Production of bananas	mn t	5,8	5,7	6,8
Production cocoa beans	1 000 t	297	197	170
Production of coffee ²⁾	1 000 t	930	1 904	1 997
Production of tobacco ³⁾	1 000 t	456	578	656
Production of milk	mn t	17,1	20,5	23,5
Production of meat ⁴⁾	mn t	12,8	15,4	18,4
incl. beef and veal	mn t	5,7	6,6	7,2
Catches of fish ⁵⁾	1 000 t	707	767	822 ¹⁾



Specification	Unit	2001	2002	2003
Industry				
Index of production in mining ⁶⁾	previous year = 100	103,5	110,7	102,4
Index of production in manufacturing	previous year = 100	101,4	101,5	100,0
incl.:				
Food products ⁷⁾	previous year = 100	104,9	104,8	97,3
Textiles	previous year = 100	94,6	99,2	93,1
Machinery	previous year = 100	106,3	108,8	108,9
		1995	2000	2003
Production of crude oil	mn t	35,5	63,2	77,0
Production of iron ore	mn t	184,5	200,4	233,5
Production of bauxite	mn t	10,2	14,4	13,1
Production of crude steel	mn t	25,1	27,9	31,1
Production of cement	mn t	28,3	39,6	34,0
Production of motor gasoline	mn t	10,8	14,0	13,8
Production of motor vehicles	1 000	1 536	1 570	1 958
Production of paper and paperboard	mn t	5,9	6,5	7,8
Production of electricity	1 000 GWh	275,6	349,2	364,9
incl. hydro power	%	92,1	87,3	83,8

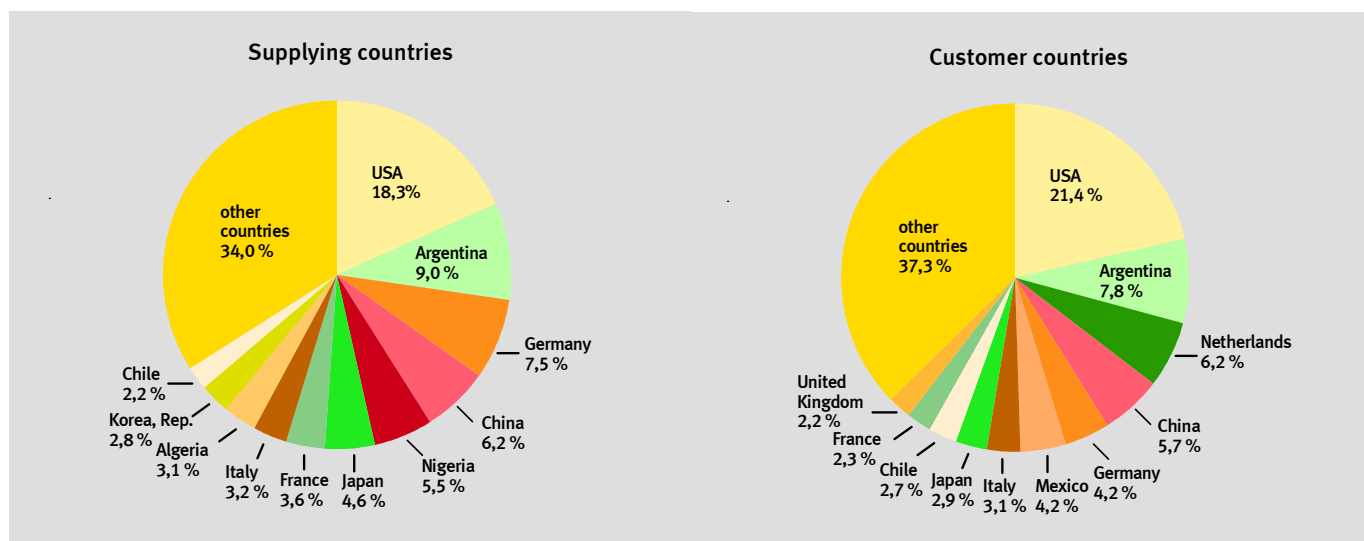
1) 2002.
2) Green beans.
3) Leaves.
4) Slaughtering weight.

5) Catches of marine, coastal and freshwater fisheries, incl. molluscs and crustaceans. Excl. mariculture and aquaculture.
6) Incl. quarrying.
7) Excl. beverages and tobacco.

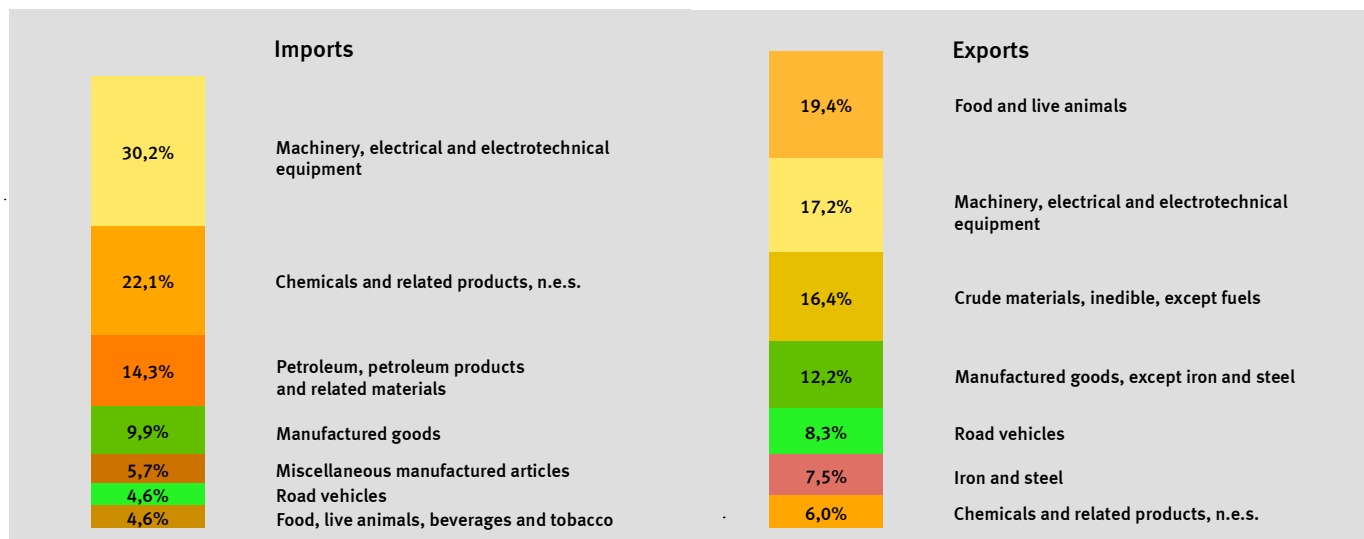
Edition 2006

Specification	Unit	2002	2003	2004
Foreign Trade				
Import of goods (cif)	R\$ mn	145 276	156 386	191 053
	US-\$ mn	49 735	50 824	65 317
incl. from Germany.....	R\$ mn	13 418	13 460	14 307
	US-\$ mn	4 594	4 375	4 891
Export of goods (fob)	R\$ mn	176 317	224 880	277 882
	US-\$ mn	60 362	73 084	95 002
incl. from Germany	R\$ mn	7 410	9 649	11 783
	US-\$ mn	2 537	3 136	4 029
Foreign trade balance	R\$ mn	+ 31 041	+ 68 493	+ 86 829
	US-\$ mn	+ 10 627	+ 22 260	+ 29 685
		Import		Export
Position of Germany in Brazil`s foreign trade ranking		rank 3		rank 5
Position of Brazil in Germany`s foreign trade ranking		rank 25		rank 29

Trading Partners in 2004



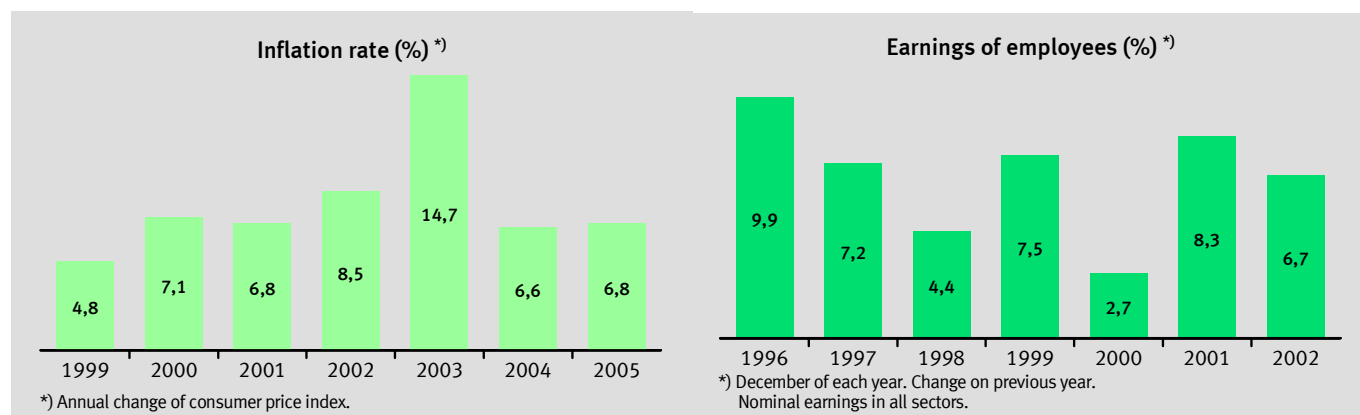
Major Commodities in 2004



Country Profile Brazil

Edition 2006

Specification	Unit	2002	2003	2004
Finance				
Exchange rate (Real/R\$)	R\$ per US-\$	2,921	3,077	2,925
Foreign exchange reserves	US-\$ mn	37 409	49 108	52 736
Nominal general government deficit (-)/surplus (+) ¹⁾	% of GDP	- 4,6	- 5,1	- 2,7
General government net debt ²⁾	% of GDP	65,5	58,7	54,2
Taxes	% of GDP	35,6	34,9	...
		2000	2001	2002
Earnings and Labour Costs				
Average gross monthly earnings of employees in all sectors ³⁾	R\$	767	830	885
	US-\$	392	358	251
incl.:				
Agriculture and forestry ⁴⁾	US-\$	171	164	116
Mining ⁵⁾	US-\$	465	582	430
Manufacturing	US-\$	390	364	255
Energy supply	US-\$	985	898	651
Construction	US-\$	290	259	180
Trade ⁶⁾	US-\$	250	228	160
Financial intermediation	US-\$	1 154	883	622
Average hourly labour costs for workers in manufacturing	US-\$	3,50	2,94	2,53



Specification	Unit	2002	2003	2004
Balance of Payments, Foreign Direct, Investment (FDI), Foreign Debt				
Current account balance	US-\$ mn	- 7 637	+ 4 177	+ 11 711
Inward stock of FDI in Brazil	US-\$ mn	100 847	132 799	161 259
Outward stock of FDI abroad	US-\$ mn	54 423	54 892	69 196
Inflows of FDI into Brazil (net)	US-\$ mn	16 590	10 144	18 166
Outflows of FDI abroad (net)	US-\$ mn	2 482	249	9 471
Foreign debt (gross)	US-\$ mn	210 711	214 930	201 374
	% of GNI ⁷⁾	47,6	44,1	34,5

1) Primary result incl. nominal interest expenditure.

2) Incl. external net debt.

3) December of each year.

4) Incl. fisheries.

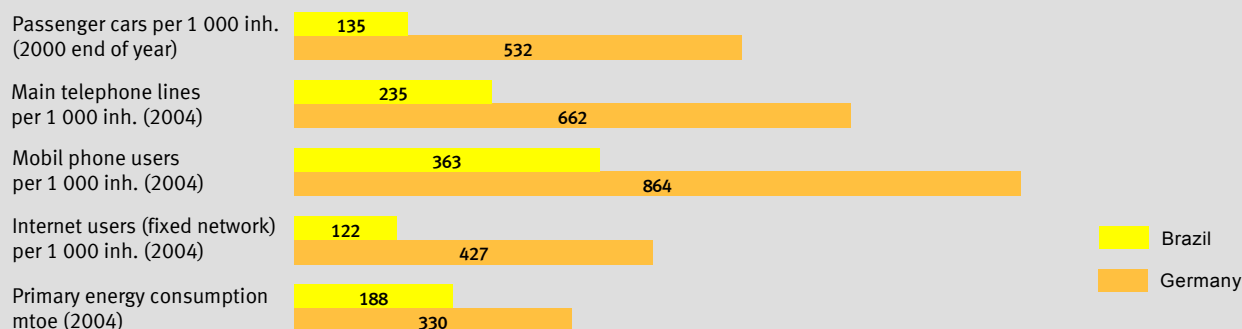
5) Incl. quarrying.

6) Incl. repair of motor vehicles.

7) Gross national income.

Edition 2006

Specification	Unit	1998	2000	2002
Transport¹⁾ and Telecommunication				
Railways				
Length of lines ²⁾	1 000 km	29,2	29,3	33,3
Passenger transport	bn passenger-km	7,2	6,5	...
Freight transport	bn tonne-km	143,2	155,6	170,2
Road transport				
Length of roads	1 000 km	.	1 724,9	1 748,3
incl. paved roads	1 000 km	.	165,0	172,9
Registered vehicles	mn	30,7	33,7	...
incl. passenger cars	mn	21,3	23,2	...
Sea transport				
Freight, transported ³⁾	mn t	435,7 ⁴⁾	459,5	...
incl.:				
Maritime shipping	mn t	296,6 ⁴⁾	314,5	370,8
Coastal shipping	mn t	122,5 ⁴⁾	130,5	...
Inland waterway shipping	mn t	16,7 ⁴⁾	14,5	...
Pipelines				
Length of lines	1 000 km	11,2	16,1	...
Transport performance	bn tonne-km	31,3	33,2	...
Air transport				
Passengers ⁵⁾	mn	.	33,9	35,9
incl. domestic air transport	mn	.	29,0	31,5
Cargo and mail	bn tonne-km	.	5,7	7,0



Specification	Unit	1995	2000	2004
Environment				
Primary energy consumption	mtoe (million tons of oil equivalent)	142,4	176,9	187,7
incl.:	toe per capita	0,90	1,04	1,04
Oil	%	48,6	48,5	44,9
Hydro power	%	40,4	38,9	38,6
Emissions of carbon dioxide	mn t	238,6	303,3	309,3 ⁶⁾
Removals of wood ⁷⁾	t per inh.	1,5	1,8	1,8 ⁶⁾
Nature protection area	mn ha	2,9	2,0	2,6
	% of land area	.	.	153,3 ⁸⁾
		.	.	18,0 ⁸⁾

1) Performance of domestic goods transport by mode in 2002: road 60,5 %, rail 20,9 %, shipping 13,9 %, pipelines 4,5 %, air 0,3 %.
Performance of domestic passenger transport by mode in 2002: road 78,3 %, air 20,7 %, rail 1,0 %, shipping 0,0 %.

2) Excl. tram and metro.

3) Maritime, coastal and inland waterway shipping.

4) 1999.

5) Passengers enplaned only.

6) 2002.

7) Deforestation since 1978: 52,8 mn ha (equals the area of the Republic of Yemen).

8) 2003.

Sources:

Brasil em números, Instituto Brasileiro de Geografia e Estatística, Rio de Janeiro
Statistical Review of World Energy, BP, London
plus various statistical publications of international organisations (UN and specialized agencies, World Bank, IMF, OECD, IEA, Eurostat, ECMT, ITU, WTO, WRI)

Internet site: www.ibge.gov.br, (Instituto Brasileiro de Geografia e Estatística)
www.bcb.gov.br (Ministério da Fazenda/Banco Central do Brasil)

Since most of the figures were taken from national sources they do not always fully correspond to those in other publications of the Federal Statistical Office, e.g. the International Statistical Yearbook, where mainly data from international organisations were used.

For further inquiries please contact the information service on international statistics of the Federal Statistical Office
(Tel. +49 18 88 / 6 44 84 73, Fax +49 18 88 / 6 44 89 93) or send an e-mail to: auslandsinfo@destatis.de

Please also make use of our other publications on international statistics available on the internet at: www.destatis.de/themen/e/thm_international.htm